

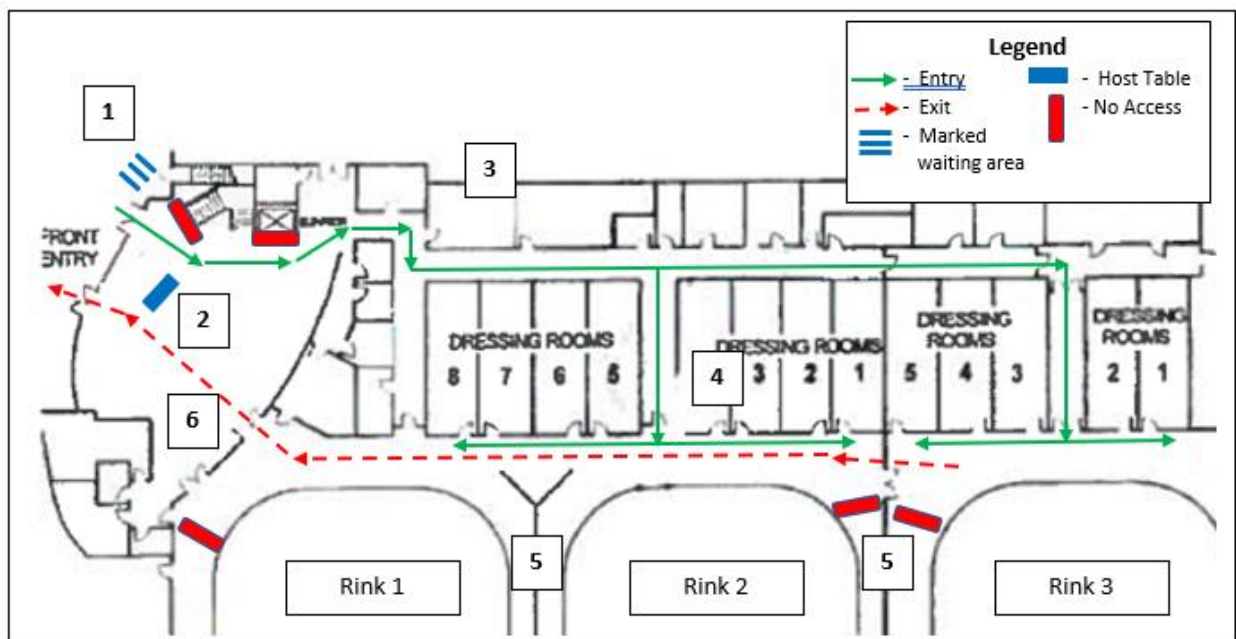
RE-OPENING GUIDELINES

Arena Operations



General Information

- All ice bookings will be one (1) hour in length with a thirty (30) minute period between each booking for an ice clean and additional cleaning for the arena boards and dressing rooms. Start times for multi-sheet facilities will be staggered to eliminate contact with other user groups.
- User groups will be escorted into the facility and assigned dressing rooms ten (10) minutes prior to the start of their booking by a facility host.
- Each group will be assigned two (2) dressing rooms per booking. The maximum occupancy for each dressing room will be ten (10) participants. A maximum number of twenty (20) skaters, including coaches, will be allowed on the ice per booking.
- One additional adult will be allowed into the facility as the designated health & safety person for the team.
- No spectators or parents will be allowed into the facility. Coaches, and designated safety person only
- On ice participation should be skill development only; no game play or formal competition will be allowed during this time
- After the ice booking, groups will have ten (10) minutes after the end of their booking to remove skates and helmets and exit the dressing rooms and facility
- Washrooms and showers will not be available in dressing rooms
- Lobby washrooms will be available for use by all user groups. The maximum capacity for each washroom is two (2) people and will be posted on the door.
- There will be designated entrances and exits and a one-way traffic flow, marked by decals on the floor, to direct participants throughout the facility and promote physical distancing (See image below)
- All user group members must always practice physical distancing when in the facility. This includes walking in hallways, in dressing rooms, on benches, and on the ice.



Prior to Arriving at the Arena

- Participants must come dressed in their hockey gear; skates and helmets can be put on in dressing rooms at the arena
- If participants require assistance with skate tying, we suggest they are tied at home or in the car and skate guards are used to get into the facility and onto the ice
- Participants must bring a full water bottle as there will be no access to water fountains at the facility
- Bring minimal or no personal belonging as dressing rooms will be propped open during the ice booking
- Any warm-ups must be done outside of the facility prior to entering for your group's booking

Arriving at the Arena

- Participants will line up outside the building using physical distancing signage and markings on the ground
- The coaches and/or the health and safety person must organize the group outside and ensure all skaters have completed the patron screening for their group.
- The group will be let into the facility ten (10) minutes prior to the start of their booking. All participants must be on time, no late comers will be given access to the building.

Entering the Facility

- Our facility host will greet the user group outside the building. They will go over the expectations of your group and remind you if you are feeling unwell, not to enter the facility. (See COVID--19 symptoms in safety plan)
- Hand sanitizer stations will be located at the entrance of the facility. You will be asked to use the sanitizer prior to entering.
- The host will walk you to your assigned dressing room(s)
- Please sit in the designated areas labelled in the dressing room(s) to ensure all participants are two (2) meters apart
- Showers and washrooms in the dressing rooms will not be available for use
- Dressing rooms will remain open during the booking to reduce touch points
- Chairs will be placed outside the dressing rooms for coaches to sit on while they put on skates

On the Ice

- Water bottles and skate guards will have assigned spots to be placed along the boards
- The players benches will not be available for use
- Spitting will NOT be tolerated. Anyone seen spitting on the ice or anywhere in the facility will be asked to leave the building.

- Cones and equipment must be brought by the coach. The arena will have no shared equipment available for use.
- There are X's placed in the ice at each end of the arena that runs the full width. They are there for skaters to use to assist physical distancing while waiting for drills.
- User groups will be responsible for all first aid and medical incidents for their own group.
- If music is required, groups must designate one person to control the music during that booking

Exiting the Facility

- At the end of your ice time, you will have ten (10) minutes for your group to exit the facility together. The facility host will escort your group to the exit doors.
- Please wait in the dressing room on your designated spot till the host is ready to escort the whole group.

COVID-19 Test Positive Procedure

- If a participant develops symptoms at the facility, an isolation room will be provided to separate the participant from the rest of the group
- If a participant tests positive for COVID-19 the organization must notify the facility manager immediately

Cleaning

- There will be 30 minutes between each group to facilitate cleaning of the boards, nets, and dressing rooms.
- High traffic areas and touch points will also be cleaned to include doorknobs, washrooms, doors, gates.
- Any equipment that belongs to the group and is used will be cleaned by the group.